



ISM, MMDS, and UNII Band Passive Products

Index

| | |
|--|------|
| PD Series Parabolic Dish Antennas | .725 |
| Ordering Information | .725 |
| MAG GRID Antennas | .725 |
| Ordering Information | .725 |
| MICROCEPTOR® Antennas | .726 |
| Ordering Information | .726 |



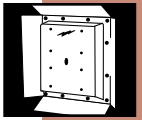
23T-5800



18T-2400



26T-2400



PD Series Parabolic Dish Antennas

- Durable antenna offers excellent performance at low cost.
- Spun aluminum reflector. in 16 in and 24 in sizes.
- Lightweight, stacked packaging minimizes freight and handling costs.
- RG8 pigtail, 13 in (330 mm) long.
- Up to 60° tilt adjustment.

MAG GRID Antennas

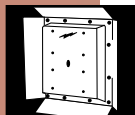
- Patented grid reflector design provides excellent reliability plus easy handling and installation.
- Lightweight and durable. Materials include magnesium alloy, aluminum, and stainless steel.
- RG8 pigtail, 24 in (610 mm) long.
- Up to 60° tilt adjustment.
- Antenna ships disassembled for minimum freight costs. Factory assembly is available as an option.

Ordering Information

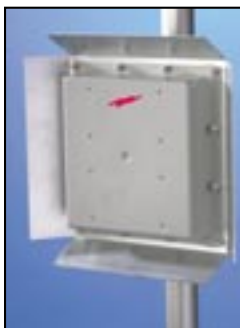
| Frequency Band MHz | Type Number* | Gain dBi | 3 dB Beamwidth Vertical Azimuth Degrees | 3 dB Beamwidth Vertical Elevation Degrees | VSWR, MAX (R.L., dB) |
|---------------------------|-------------------|----------|---|---|----------------------|
| PD Series Antennas | | | | | |
| 2400–2500 | 19T-2440-1 | 19 | 16 | 17 | 1.7 |
| 2400–2500 | 21T-2441-1 | 21 | 10 | 11 | 1.7 |
| 5700–5875 | 23T-5800-1 | 23 | 7 | 7 | 1.8 |
| 5700–5875 | 28T-5801-1 | 27 | 4 | 6 | 1.8 |
| MAG GRID Antennas | | | | | |
| 1700–2100 | 18T-1900-1 | 14 | 14 | 16 | 1.6 |
| 1700–2100 | 26T-1900-1 | 21 | 8 | 14 | 1.5 |
| 2100–2700 | 18T-2127-1 | 16 | 14 | 12 | 1.6 |
| 2100–2700 | 26T-2127-1 | 24 | 7.5 | 10 | 1.5 |
| 2400–2500 | 18T-2400-1 | 17 | 14 | 13 | 1.6 |
| 2400–2500 | 26T-2400-1 | 23 | 7.5 | 10 | 1.5 |

*N male connector is standard. To order optional N female connector, add F to end of Type Number.

*All Type Numbers are single packs. Bulk packs are also available.



DL-2400



QD-2400

MICROCEPTOR® Antennas

- Patented feed design offers excellent directivity in a low profile package.
- Small, aesthetically pleasing.
- Excellent cross-polarization discrimination and front-to-back ratio.
- Low wind load.
- Up to 60° tilt adjustment.
- Cosmetic covers are available.
- Premise mounts are available.

The MICROCEPTOR antenna was designed to fill the need for high performance radiation patterns together with a smaller, more attractive look.

Ordering Information

| Frequency Band MHz | Type Number | Mount Type* | Gain dBi | 3 dB Beamwidth Vertical Azimuth Degrees | 3 dB Beamwidth Vertical Elevation Degrees |
|--------------------|----------------|-------------|----------|---|---|
| 2100-2700 | DL-2122 | Tilt | 13 | 47 | 27 |
| 2100-2700 | DL-2127 | Standard | 13 | 47 | 27 |
| 2100-2700 | QD-2122 | Tilt | 16 | 27 | 27 |
| 2100-2700 | QD-2127 | Standard | 16 | 27 | 27 |
| 2400-2500 | DL-2400 | Standard | 13 | 47 | 27 |
| 2400-2500 | DL-2402 | Tilt | 13 | 47 | 27 |
| 2400-2500 | QD-2400 | Standard | 16 | 27 | 27 |
| 2400-2500 | QD-2402 | Tilt | 16 | 27 | 27 |
| 2400-2500 | DL-2410 | Standard | 11 | 75 | 27 |
| 2400-2500 | DL-2412 | Tilt | 11 | 75 | 27 |

*Tilt mount provides 60° tilt adjustment.

Cosmetic Cover

For DL Series
Type **DC-1000**
For QD Series
Type **QC-1000**

Micro-Mount

Universal low premise mount
Type **UM-1200**
Micro-Mount extension bracket
Type **EX-1000**

Right Angle Adapter

N male to N male
Type **363030**



Grounding Block

- Provides grounding protection while maintaining outstanding RF performance
- Diverts power surges and static build-up from the coaxial cable outer conductor to ground
- Operates in DC-3 GHz and beyond
- Low insertion loss/low VSWR: protects equipment without sacrificing system performance
- Easy to install: compact integrated one-piece design
- Compatible with low loss distribution cables
- Fully weatherproof
- Excellent microwave performance

This unit has a compact and integrated one-piece design suitable for indoor or outdoor installations. Installation is easy: a nickel-plated brass N Female/N Female interface, two mounting screws, and a grounding stud are all provided.

Ordering Information

| | |
|---|---|
| Type Number | BG-3000 |
| Frequency Bandwidth, GHz | DC-3 usable to 6 |
| VSWR | 1.100 Typical |
| Return Loss, dB | -27 Typical |
| Insertion Loss | <0.2 Typical |
| Dimensions, in (mm) | 1.25 (32) x 1.563 (40) x 2.250 (57) |
| N Female/N Female Interface | Nickel-plated brass |
| Mounting Bracket | Die cast Zinc with yellow dichromate finish |
| Distance between Mounting Hole Centers, in (mm) | 1.875 (48) |
| Weight, oz (lb) | 3.2 (0.2) |